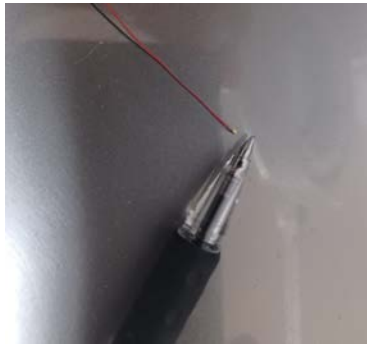


Installing LocoFi in a KATO EMD GP35 Phase Ia Norfolk Southern #1308 37-034

As in my earlier write up on RS2, I use the same material and remove some parts to make room for the LocoFi board (LF). In this case, I had to remove the weight, 1x light pipe and the light board. They go in the box for future-if necessary. I use the same type of 2xSMD LEDs for the back and just 1 for the front. The rear LEDs are sitting in the 2 holes that had the light pipe protrusions. The front LED is secured to the original light pipe with a piece of heat shrink tubing.

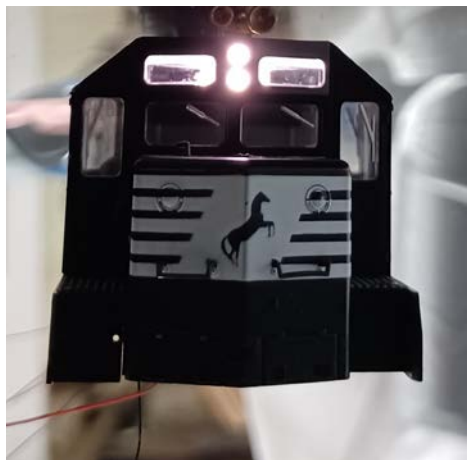


Front LED

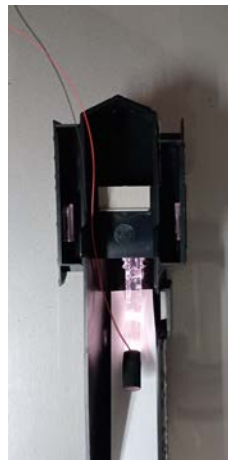
Rear LEDs

LEDs on power:

Rear



Front

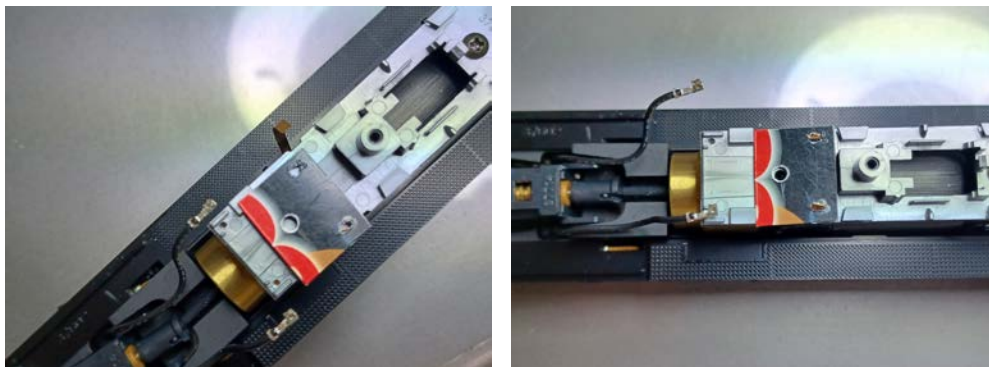


Power connections with heat shrink:

Motor brush connections are insulated from the power connections. I do not cut or alter any of the original connections as much as possible. The motor connections are with the original PB strips and they need to have some springiness to make sure the connections near the brush holders are not loose. The power connections are tinned in the middle for later connections to the LF wires.



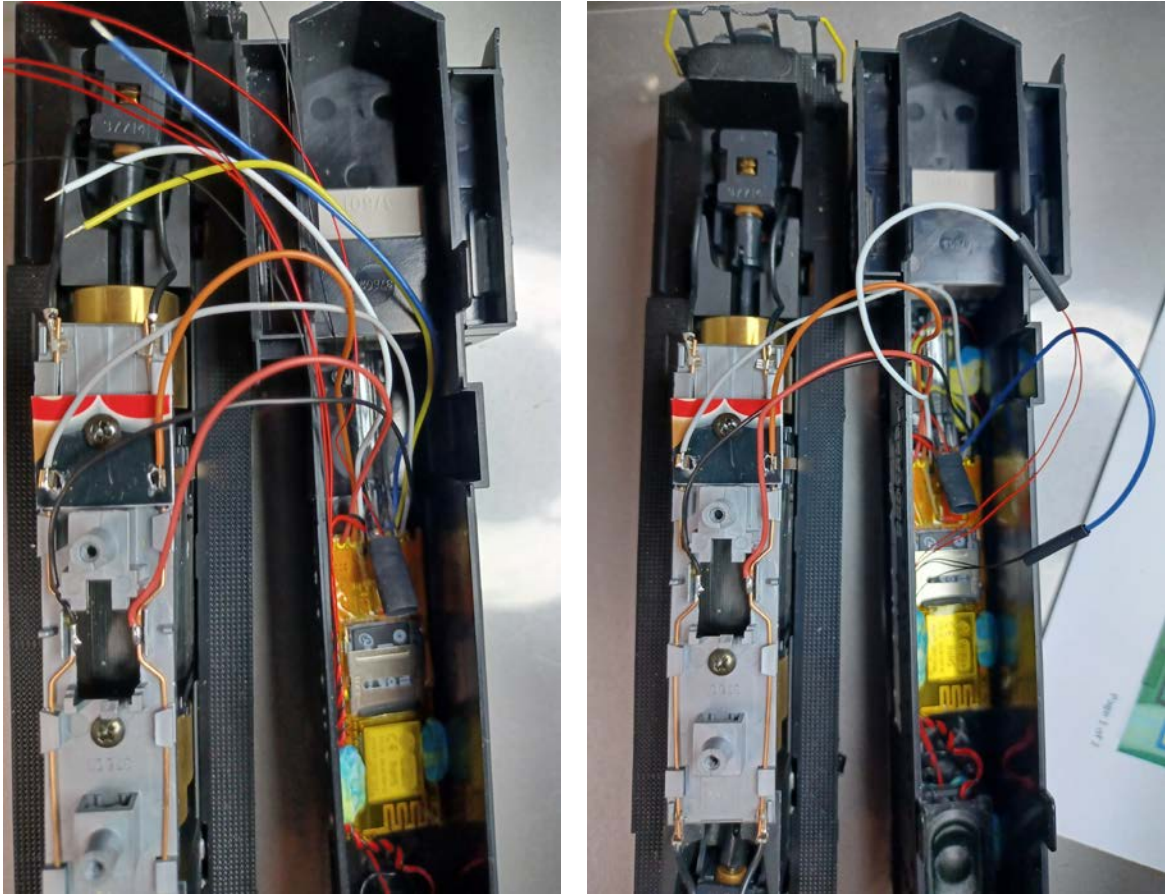
Using plastic card for motor brush connections:



Test fit

LocoFi in place and wiring:

The plastic card is secured with 1 screw from the light board.



The light pipe helps in keeping the LF board in place. I pack the sides with the “HandiTak” instead of using any glue so that everything can be easily returned to the original connection, if necessary.